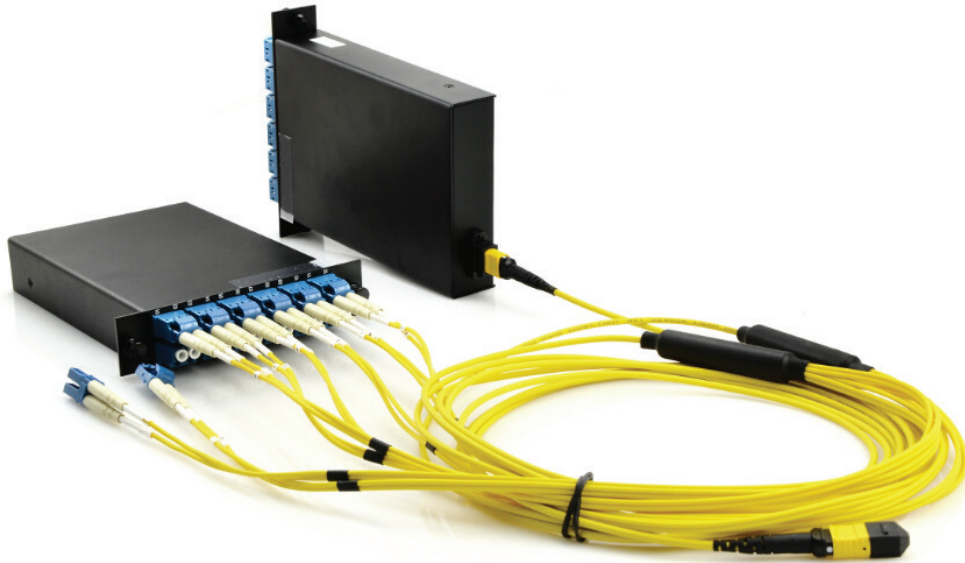




Setting the Standards

MPO Cassette



Description

LC to MTP® and SC to MTP® Fiber modules provide a quick and efficient way to deploy up to 24 LC or 12 SC fiber ports in a single module. These factory terminated and tested ports are protected within the housing for reliably high performance and simply connected via 12-strand MTP® ports. Modules are available in OM3, OM4 & SM fiber.

Modular fiber cassettes are enclosed units that contain 12 or 24-fiber factory terminated fan-outs inside. These cassettes serve to “transition” small diameter ribbon cables terminated with a MTP® connector to the more common LC or SC interface used on the transceiver terminal equipment.

The fan-outs typically incorporate SC, LC connectors plugged into adapters on the front side of the cassette and a MTP® connector plugged into a MTP® adapter mounted at the rear of the cassette. One or more MTP® fan-out assemblies may be installed inside the cassette to connect up to two 12-fiber ribbon cables for a total of 24 fibers. Alignment pins are pre-installed in the MTP® connector located inside the cassette.

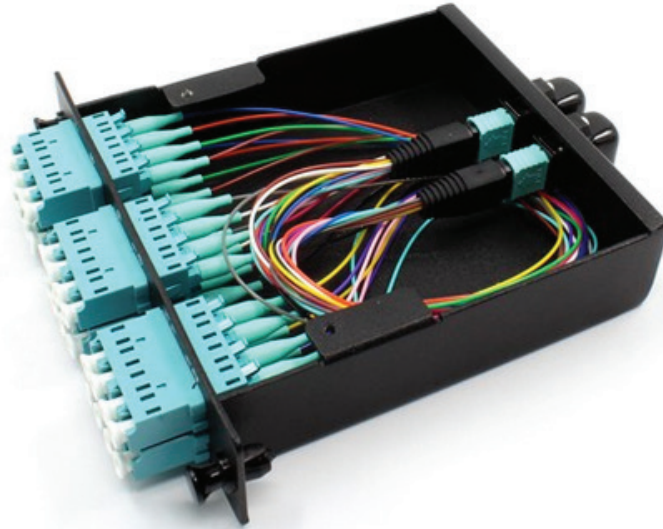
Features and Benefits

1. Easy and fast installation
2. High-density and small design
3. Metallic shell with high strength protect the inner fibers effectively
4. Factory-terminated and tested cable and apparatus for instant field connections with guaranteed quality and performance
5. 12-fiber MTP® connector-based modular design enables simple connections
6. Support easy reconfiguration for moves, adds, and changes

Applications

- Data center infrastructure
- Storage area network - fiber channel
- Parallel optics

MPO Cassette



Ordering Information	Description	Part Number
	MPO Cassette	12 Fiber: OXIN-6880 24 Fiber: OXIN-6890
Packaging	Description	
	Cardboard box, 1 unit per box	
Physical Characteristics	Parameter	Value
	Fiber	OS1/OS2, OM1, OM2, OM3, OM4
	Fiber count	12,24
	Polarity	A, B, C
	MTP Adapters	US Conec (IEC-61754 & EIA/TIA-604-5) Body Colour: Black Polarity: A/C - Keyway up - Key way down Body Colour: Grey Polarity: B - Keyway up- Keyway up
	LC Adapter	Body Colour: Aqua (MM)(OM3/OM4), Blue(SM/UPC), Green(SM/APC) Sleeve Material: Zirconia
	Terminations	MTP® Standard (12 Fiber Ferrule) MTP® Low Loss Elite (12 Fiber Ferrule) LC Standard LC Low Loss Premium
Mechanical Characteristics	Parameter	Value
	Operating temperature	-20 ~ 60°C
	Installation temperature	-20 ~ 60°C
	Storage temperature	-20 ~ 60°C
	Weight	0.55kg



Oxin Group S.A.

Head-office: 5, bd du General Martial Valin,
75736 Paris Cedex 13 - France

Web: www.OxinGroup.net

E-mail: info@oxingroup.net

MPO Cassette Data Sheet
VER 2.2EN 2017-08-09

Copyright © 2017 Oxin Group S.A. All Rights Reserved