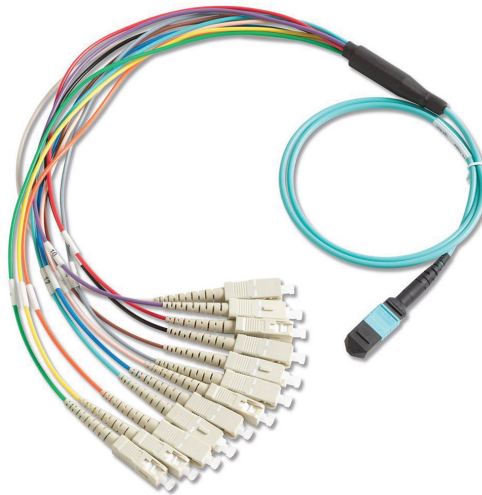




Setting the Standards

Pre-Terminated MPO/MTP Fan Out Assembly



Description

Oxin MPO/MTP ruggedized Fan Out assemblies route Multifiber MPO/ MTP connection into discrete connectors. They are used to directly interconnect MPO/MTP cassettes, panels or backbone MPO/MTP assemblies with the active equipment, saving costly data center rack space and easing fiber management.

MPO/MTP Fan Out assemblies are offered in most fiber types as standard 12 to 144 core versions using a compact and rugged microcore structure. The compact cables optimize cable-way use and improve airflow.

Oxin MPO/MTP Fan Out are built with highest quality components. Standard MPO/MTP as well low loss Elite versions are offered featuring low insertion loss for demanding high speed networks where power budgets are critical.

Features

1. OS2/1, OM3, OM4 Fiber Versions (OM1 and OM2 available)
2. 12 and 24 Core Microcable Trunk Assemblies
3. LSZH, OFNP, OFNR Cable Jacket
4. Female or Male MTP connectors
5. Factory Terminated and Tested

Applications

- Data Center Infrastructure
- Storage Area Network
- Fiber Channel

Standards Compliance

- TIA/EIA-568-C.3 and ISO/IEC 11801
 - IEC-61754-7 & EIA/TIA-604-5
 - NFPA 262 (OFNP) or IEC 60332 (LSZH) TIA/EIA 568-B.1-7
 - This product conforms to the materials requirements of RoHS2
 - REACH and SvHC
-

Pre-Terminated MPO/MTP Fan Out Assembly

The diagram shows a fan-out assembly with sections labeled A through H. Section A is orange, B is green, C is red, D is blue, E is purple, F is yellow, G is dark blue, and H is dark green. Below the diagram is a table defining the parameters for each section.

Fiber type		Fiber count	Connector end A	Gender side A	Connector end B		Assembly type	Tails type	Length (m)
A	B	12	S	F	SC	SA	D	F	X
OS2	G657.A1	12	MTP Standard	Female	SC	SA/APC	Double Jacket Trunk	Ruggedized Fanout SX Tails	x
C	D	24	E	M	LC	LA	P	A	
OM3	OM4	24	MTP Elite	Male	LC	LC/APC	Single Jacket Patch	Ruggedized Fanout DX Tails 1 to A	

Ordering Information	Description	Part Number
	MPO/MTP Fan Out Assembly	MTP-XXXXXXXXX-X
Packaging	Description	
	Clear poly bag, 1unit per bag	
Physical Characteristics	Parameter	Value
	Fiber	OS1/OS2, G657A1, OM3, OM4
	Tail Dimensions	2mm Simplex Tails Fanout 2mm Duplex Tails Fanout
	MTP Terminations	MTP® 12 Fiber Ferrule US Conec Boot Colour: Black Body Sleeve Colour: MM (Beige), MM Elite (Aqua), SM (Green), SM Elite (Yellow)
	Other Terminations	LC, SC, LC/APC, SC/APC
	Cable Diameter	12 Cores Trunk Double Jacket OD MAX: 4.5 ± 0.3 mm 12 Cores Patch Single Jacket OD MAX: 3.0 ± 0.3 mm
	Crush Resistance	1000N/100mm
	Cable Tensile Strength	12 Cores Double Jacket 4.5mm OD (Short/Long) 400N/160N
Mechanical Characteristics	Parameter	Value
	Operating temperature	-20 ~ +60°C
	Storage temperature	-20 ~ +60°C
	Installation temperature	-5 ~ +50°C



Oxin Group S.A.

Head-office: 5, bd du General Martial Valin,
75736 Paris Cedex 13 - France

Web: www.OxinGroup.net

E-mail: info@oxingroup.net

MPO Fan Out Data Sheet
VER 2.2.EN 2017-08-09

Copyright © 2017 Oxin Group S.A. All Rights Reserved