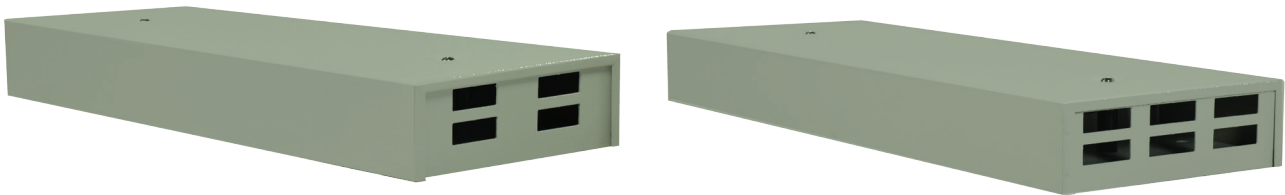




Setting the Standards

Metal Wall Mount Box



Description

Oxin compact fiber optic wall mount patch panel is designed for fiber optic patching where space saving is important. The patch panel is made of 16 gauge cold rolled steel (CRS) with a black powder coated finish, and accepts one single LGX or Keystone adapter strip. This versatility offers the user the possibility to either have a full fiber optic patch panel with the LGX adapter strip, or have a mix of medium by using the Keystone footprint adapter strips. This compact patch panel has a maximum capacity of 24 fiber when equipped with 6 quad LC adapters on a LGX strip. Self-sealing grommets accommodate multiple cable entrance. A pad lock (not included) can be used to restrict access to the connections and provide additional network security.

Features and Benefits

1. Compact design for space saving
2. Keystone adapter strip is compatible with all Oxin connectors, couplers, inserts, and all other products with a standard Keystone footprint
3. 2 grommets to limit contaminant intrusion at the cable entrance points
4. Maximum capacity of 24 fiber in one single LGX adapter strip
5. Lockable to protect your network (pad lock not included)
6. Installation hardware included

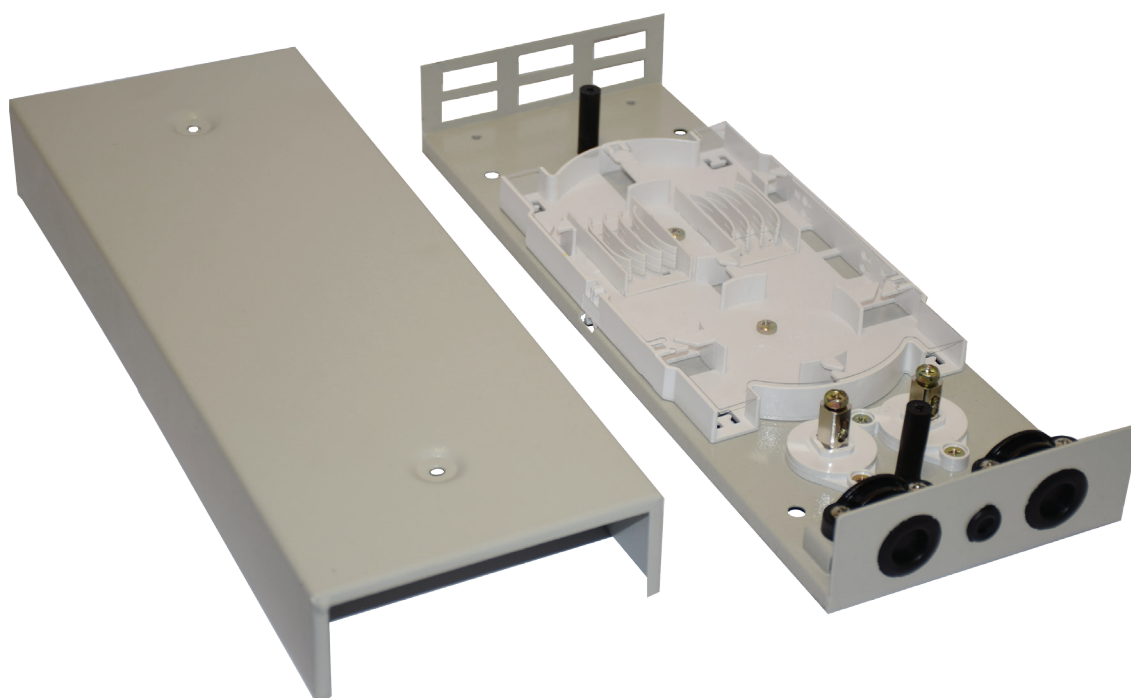
Applications

- Indoor installation
- Data center
- Telecommunications room
- Equipment room
- Consolidation point

Certification and Compliance

TIA-569-B	Commercial Building Standard for Telecommunications Pathways and Spaces
EIA/ECA-310-E	Cabinets, Racks, Panels and Associated Equipment standard
GR-1502-CORE	Central Office/Network Environment Detail Engineering Generic Requirement
IEC 60297 series	Mechanical structures for electronic equipment
UL 94	Tests for Flammability of Plastic Material for Parts in Devices and Appliances
RoHS	Directive on Restriction of Hazardous Substances

Metal Wall Mount Box



	Description	Part Number
Ordering Information	Wall mount patch panel	4port SC DX: OXIN-9310
		6port SC DX: OXIN-9410
Packaging	Description	
	Cardboard box, 1 unit per box	
Inclusion	Description	
	1 splice tray, 2 cable clips, 2 cable glands, 4 nylon ties, 8/12 screws, 8/12 fusion sleeves	
Physical Characteristics	Parameter	Value
	Fiber count capacity	24 fibers maximum
	Plastic materials	UL 94V-0 ABS thermoplastic
	Panel material	1 Gauge cold rolled steel (CRS)
	Weight	1.12 Kg
Dimensions	330 mm x 122 mm x 42 mm	
Mechanical Characteristics	Parameter	Value
	Operating temperature	-25 ~ 40°C
	Storage temperature	-25 ~ 55°C
Relative humidity	≤ 85%	